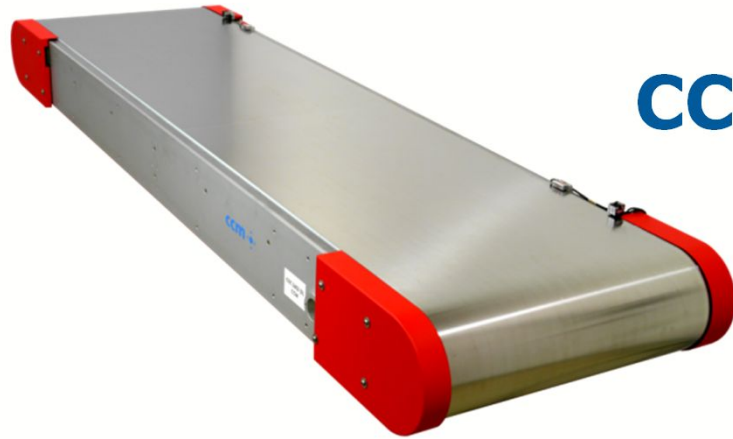


# CCM Substrate Carrier





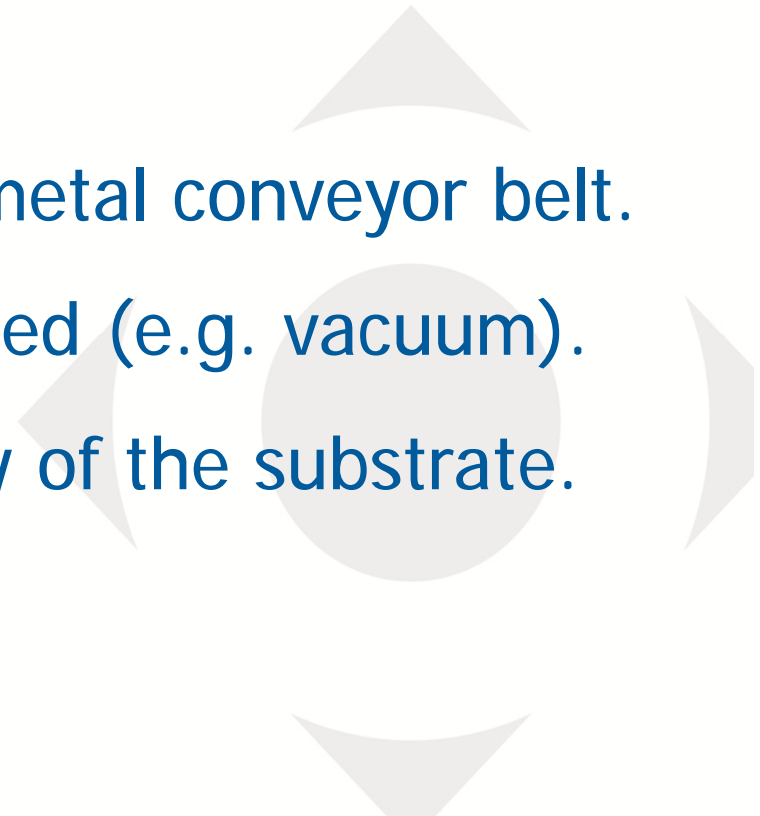
## CCM Generic Substrate Carrier

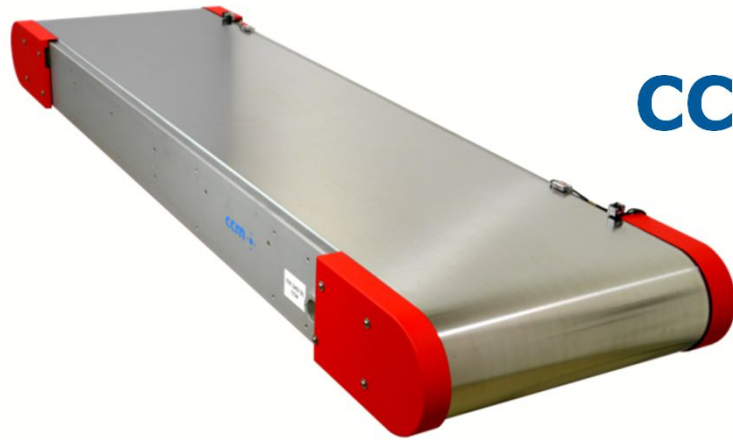
What is it?

It is a very accurately running metal conveyor belt.

On which a substrate is fastened (e.g. vacuum).

The belt imposes the accuracy of the substrate.





## CCM Generic Substrate Carrier

What does it do?

It transfers substrates through an inkjet printer very accurately, down to micrometer range, in 3 directions.

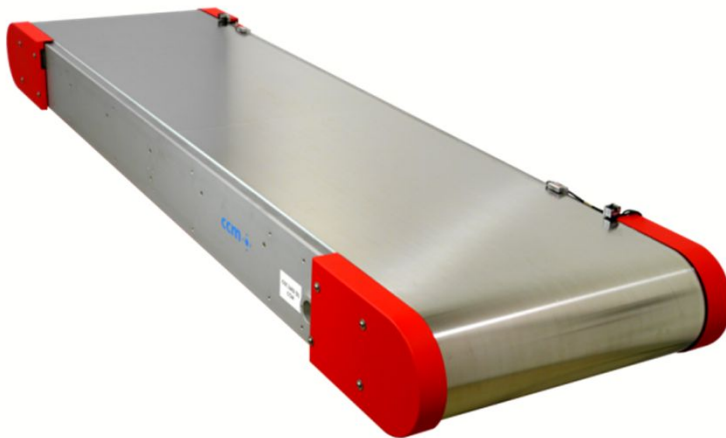
In combination with:  
High throughput, up to 2.5 m/sec



## CCM Generic Substrate Carrier

### Why is it generic (1/2)

It's a module



To be build into a machine



Stand alone machine,  
to build process modules on top of



## CCM Generic Substrate Carrier

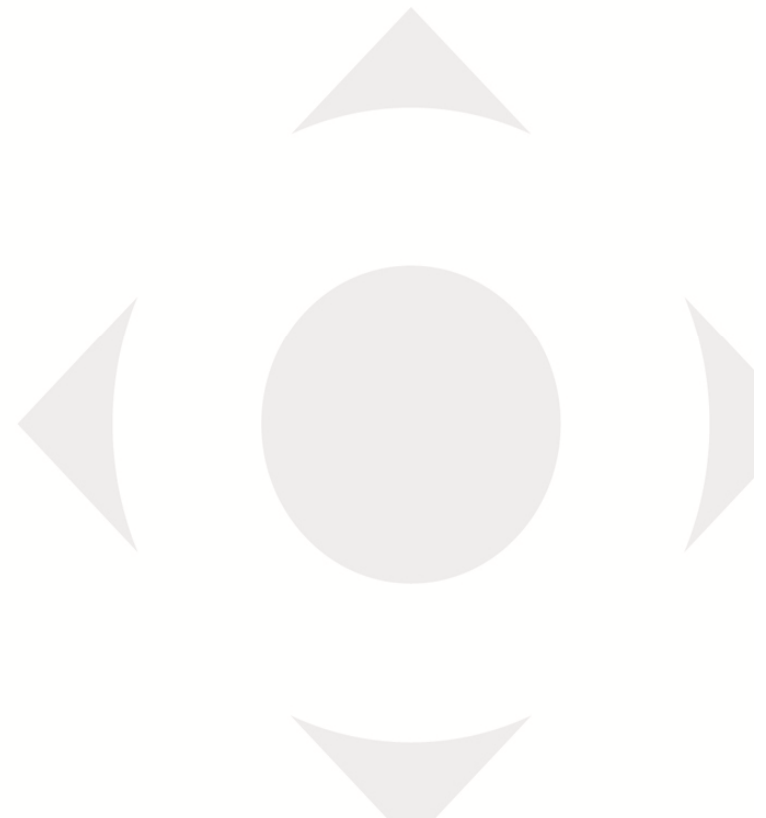
### Why is it generic (2/2)

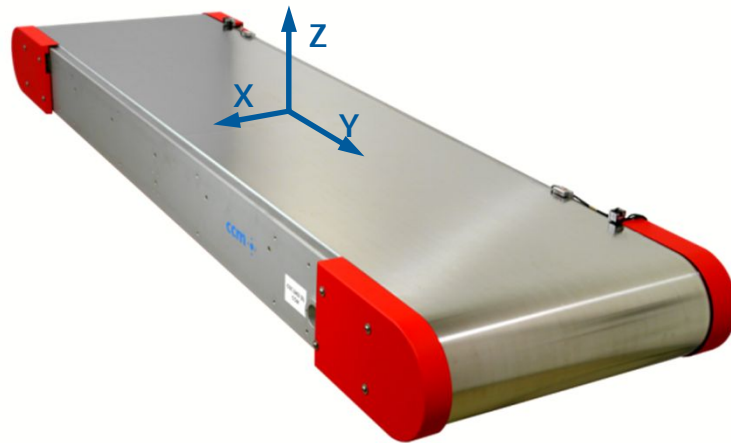
- All kind of substrates can be processed: paper, foil, wafers, glass, cardboard.
- Length and width can be chosen.
- Applicable in Roll to Roll and Sheet to Sheet processes.
- Applicable for Rigids and for bendable materials





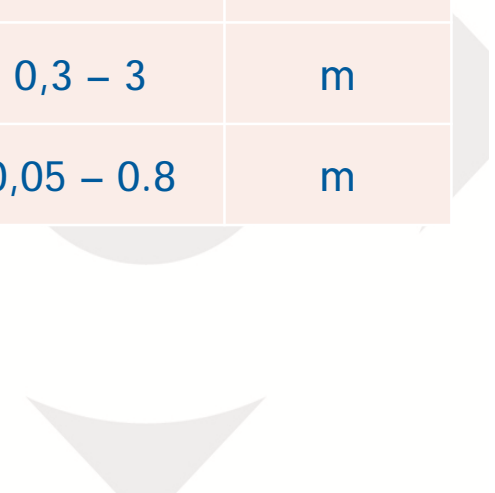
Video





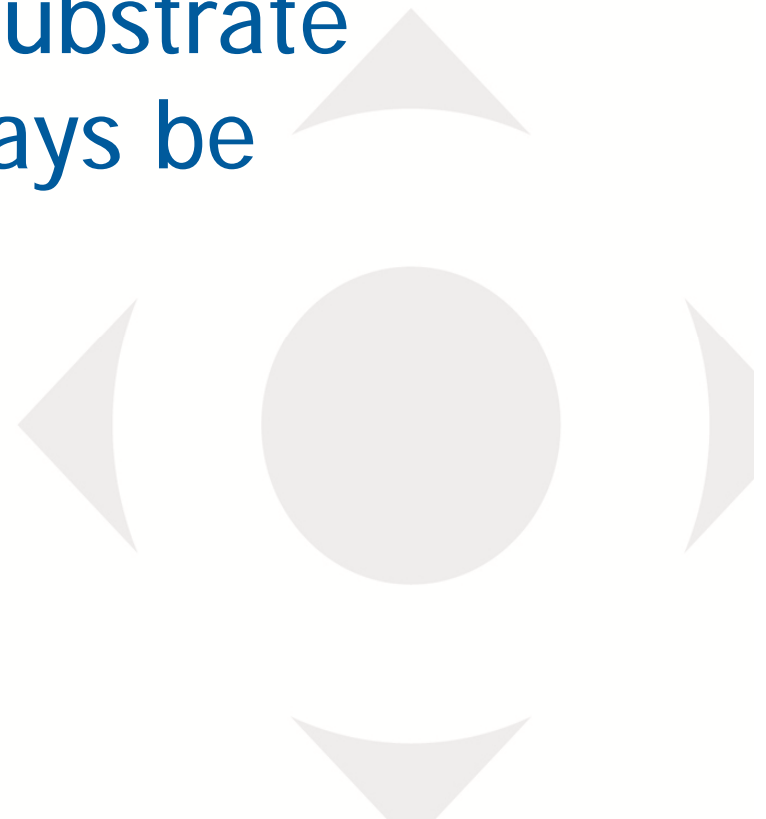
## Belt 560 x 1800 [mm] @ 2 [m/s]

Requirement	Value	Unit
Accuracy in Y	$\pm 7$	$\mu\text{m}$
Accuracy in X (L= 0,6m)	$\pm 6$	$\mu\text{m}$
Accuracy in Z	$\pm 20$	$\mu\text{m}$
Velocity range	0,2 – 2,5	m/s
Velocity stability in Y	$\pm 0,5$	%
Active (print) length	0,3 – 3	m
Substrate width	0,05 – 0.8	m





Onsite Experiments at your  
premises with a Substrate  
Carrier can always be  
arranged





De Pinckart 24  
P.O. Box 12  
5670 AA Nuenen  
The Netherlands

Phone +31(0)40-2635000  
Fax +31(0)40-2635555

E-mail [info@ccm.nl](mailto:info@ccm.nl)  
Web [www.ccm.nl](http://www.ccm.nl)



# CCM

## Imaging and Printing

# Generic Substrate Carrier

